

Multi-line basic insert, arranged side by side

For buildings without a basement

MSH Basic FUBO SR4 EBT

Article no.: 1551008600, GTIN: 4052487204804



- **Variable height adaptation to the finished floor level**
- **easy integration of the vapour barrier using the adhesive ribbon**

For the collective feeding in and sealing of all supply lines (power, water, telecommunications, gas) through the base slab. Is supplemented with separately available spiral hose system, seal insert and utility sealing elements.



Picture may differ from selected product

FACTS

Advantages:

- Seals all supply lines through one entry
- All services are fed in separately
- Continuous duct connection up to the main supply lines at the edge of the property possible
- The arrangement of the individual services is flexible
- The individual frame segments can be snapped together

Scope of delivery:

- 1 piece basic insert with installation fixture



Dimensions:

- Width: 216 mm
- Length: 579 mm
- Height: 270 mm

Properties:

- DVGW-certified
- Can be supplemented with a flexible spiral hose system

Application range:

- DIN 18533 W1-E
- Waterproof concrete stress class 1, waterproof concrete stress class 2

Material:

- Wall sleeve frame parts: ABS
- Installation fixture: St37

Tightness:

- gastight and watertight to 1.0 bar

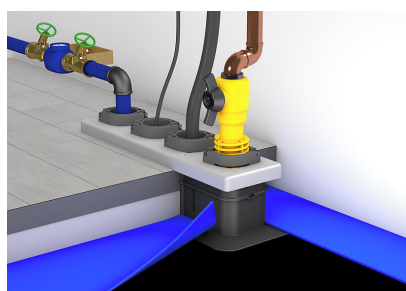
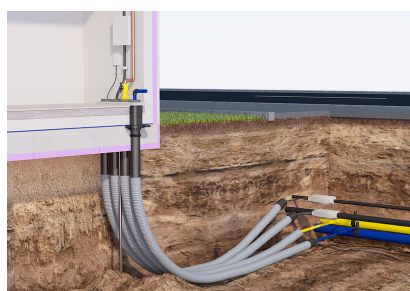
Tests/Standards:

- DVGW VP 601

FEATURES

Item: Mehrsparten-Rohbauteil
Reihenanzordnung

PICTURES



ACCESSORIES REQUIRED



Spiral hose system



Seal insert for basic insert