

# Multi-line basic insert, arranged side by side for buildings without a basement

## MSH Basic FUBO SR4 EBT

Article no.: 1550000002, GTIN: 4052487161244



- **variable height adaptation to the finished floor level**
- **easy integration of the vapour barrier using the adhesive flange**

For the collective feeding in and sealing of all supply lines (power, water, telecommunications, gas) through the base slab. Is supplemented with separately available spiral hose system, seal insert and utility sealing elements.



Picture may differ from selected product

## FACTS

### Advantages:

- Seals all supply lines through one entry
- All services are fed in separately
- Continuous duct connection up to the main supply lines at the property boundary possible
- The arrangement of the individual services is flexible
- The individual frame segments can be snapped together

### Scope of delivery:

- 1 piece of basic insert with installation fixture



## Dimensions:

- Width: 216 mm
- Length: 579 mm
- Height: 270 mm

## Properties:

- DVGW-certified
- for setting in concrete in the floor slab – also for buildings with a basement, e.g. on a slope
- Can be supplemented with a flexible spiral hose system

## Application range:

- Water exposure class DIN 18533: W1-E
- Waterproof concrete stress class 1 and 2

## Material:

- Wall sleeve frame parts: ABS
- Installation fixture: St37

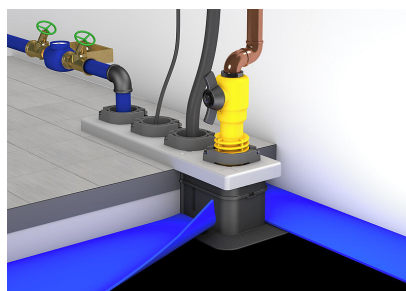
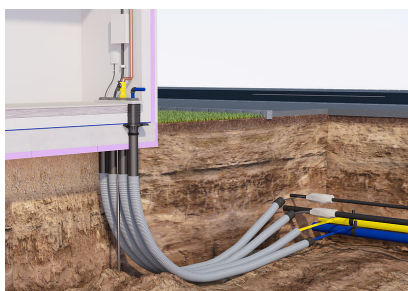
## Tightness:

- gastight and watertight to 1.0 bar

## Tests/Standards:

- DVGW VP 601

## PICTURES



# ACCESSORIES REQUIRED



Seal insert for basic insert



Spiral hose system