

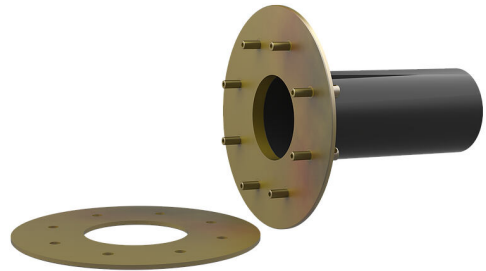
Fixed/loose flange wall sleeve galvanised

For setting in concrete and connecting bituminous coating

FLFE1x150/365 DIN18533 St-FVZ

Article no.: 3030453925, GTIN: 4052487242615

For setting in concrete or mortaring into walls, ceilings or floors.



Picture may differ from selected product

FACTS

Advantages:

- flexible wall thickness adjustment thanks to plastic wall sleeve
- Installation flush with formwork

Scope of delivery:

- 1 piece of fixed/loose flange wall sleeve
- Fastenings for concrete
- Bolts and nuts
- 2 pieces of closing covers

Dimensions:

- for wall thicknesses of up to 500 mm
- Design in accordance with DIN 18533 includes: components in contact with the soil
- Standard fixed flange $\varnothing a$ equal to the relevant wall sleeve $\varnothing i$ + approx. 330 mm (for one passage)

Application range:

- Water exposure class DIN 18533: W1-E, W2.1-E and W2.2-E

Material:

- Fixed/loose flange wall sleeve steel galvanised (gv)
- Wall sleeve: plastic PVC-U
- Closing cover: PE
- Bolts and nuts: steel galvanised (gv)

Tightness:

- gastight and watertight

FEATURES

Wall sleeve ID (mm):	150
Fixed flange OD (mm):	475
Loose flange OD (mm):	465
Wall sleeve wall thickness (mm):	2
Wall thickness (mm):	365

PICTURES



ACCESSORIES REQUIRED



Rubber inlays