

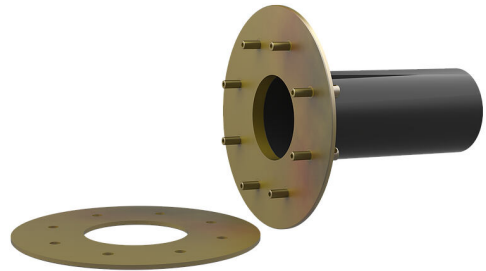
Fixed/loose flange wall sleeve galvanised

For setting in concrete and connecting bituminous coating

FLFE1x200/200 DIN18533 St-A3C

Article no.: 3030353471, GTIN: 4052487226998

For setting in concrete or mortaring into walls, ceilings or floors.



Picture may differ from selected product

FACTS

Advantages:

- flexible wall thickness adjustment thanks to plastic wall sleeve
- Installation flush with formwork

Scope of delivery:

- 1 piece of fixed/loose flange wall sleeve
- Fastenings for concrete
- Bolts and nuts
- 2 pieces of closing covers

Dimensions:

- for wall thicknesses of up to 500 mm
- Design in accordance with DIN 18533 includes: components in contact with the soil
- Standard fixed flange $\varnothing a$ equal to the relevant wall sleeve $\varnothing i$ + approx. 330 mm (for one passage)

Application range:

- Water exposure class DIN 18533: W1-E, W2.1-E and W2.2-E

Material:

- Fixed/loose flange wall sleeve steel galvanised (gv)
- Wall sleeve: plastic PVC-U
- Closing cover: PE
- Bolts and nuts: steel galvanised (gv)

Tightness:

- gastight and watertight

FEATURES

| | |
|----------------------------------|-----|
| Wall sleeve ID (mm): | 200 |
| Fixed flange OD (mm): | 530 |
| Loose flange OD (mm): | 520 |
| Wall sleeve wall thickness (mm): | 2 |
| Wall thickness (mm): | 200 |

PICTURES



ACCESSORIES REQUIRED



Rubber inlays