

Always. Reliable. Tight.

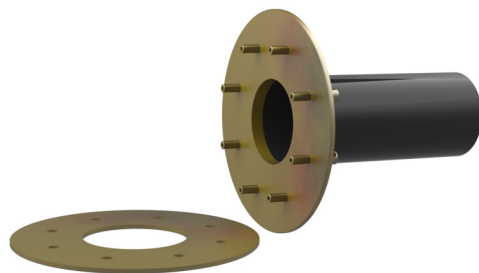
# Fixed/loose flange wall sleeve galvanised

## for setting in concrete for black tank

FLFE 1x200/500 DIN18533 A3C

Article no.: 3030353479

For setting in concrete or mortar in walls, ceilings or floors.



Picture may differ from selected product

## FACTS

### Application range:

- DIN 18533 W2.1-E, DIN 18533 W2.2-E

### Advantages:

- flexible wall thickness adjustment thanks to plastic wall sleeve
- Installation flush with formwork

### Scope of delivery:

- Fixed/loose flange wall sleeve
- Fastenings for concrete
- Bolts and nuts
- 2 closing covers

### Dimensions:

- for wall thicknesses of up to 500 mm
- Design according to DIN 18533 includes: underground structural components. Standard fixed flange  $\varnothing$ a equal to the relevant wall sleeve  $\varnothing$ i + approx. 330 mm (for one passage; see brochure for details)

## Material:

- Fixed/loose flange wall sleeve steel galvanised (gv)
- Wall sleeve: plastic PVC-U
- Closing cover: PE
- Bolts and nuts: steel galvanised (gv)

## Tightness:

- gastight and watertight

## FEATURES

Wall sleeve ID (mm) D1:	200
Wall sleeve $\varnothing$ (mm) D2:	530
Wall sleeve $\varnothing$ (mm) D3:	520
Wall thickness (mm):	500
Optimal application range OD (mm):	110 – 162
Max. possible application range $\varnothing$ (mm):	0 – 171

## PICTURES

