

Always. Reliable. Tight.

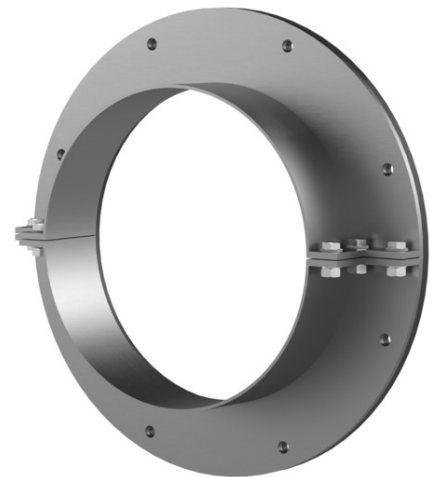
Stainless steel flange split

for retrofit dowelling

FAG1x500/80 A2

Article no.: 0910990003, GTIN: 4052487021296

For dowelling through existing recesses/break-throughs in walls or floor slabs for media lines that have already been laid.



Picture may differ from selected product

FACTS

Application range:

- DIN 18533 W1.1-E, DIN 18533 W1.2-E, DIN 18533 W2.1-E
- Waterproof concrete stress class 1, Waterproof concrete stress class 2

Advantages:

- Split design for media lines that have already been laid
- Tailor-made designs can also be produced
- Also available with multiple entries and in a variety of diameters

Scope of delivery:

- Stainless steel flange
- Surface seal
- Fastenings

Dimensions:

- Standard flange dimensions OD or \square_a equivalent to the corresponding wall sleeve ID + approx. 150 mm (for one entry; see the brochure for detailed information)
- Standard upper length: 80 mm

Material:

- Flange: stainless steel V2A (AISI 304L) or V4A (AISI 316L)
- Surface seal: EPDM
- Fastenings: stainless steel V4A (AISI 316L)

FEATURES

Wall sleeve/core drilled hole ID (mm):	500
Optimal application range OD (mm):	370 – 420
Max. possible application range \varnothing (mm):	0 – 450
Wall sleeve wall thickness (mm) S:	4
Flange standard dimensions (mm):	\varnothing 650

PICTURES



ACCESSORIES REQUIRED



EGO sealant