

Always. Reliable. Tight.

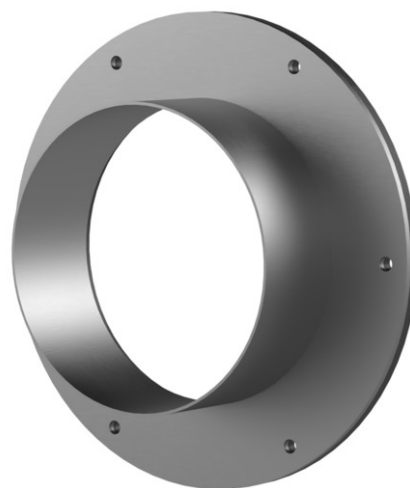
# Stainless steel flange

## for retrofit dowelling

FA1x300/80/0 A2

Article no.: 0910890000, GTIN: 4052487021098

For dowelling through existing recesses/break-throughs in walls or floor slabs.



Picture may differ from selected product

## FACTS

### Application range:

- DIN 18533 W1.1-E, DIN 18533 W1.2-E, DIN 18533 W2.1-E
- Waterproof concrete stress class 1, Waterproof concrete stress class 2

### Advantages:

- Tailor-made designs can also be produced
- Also available with multiple entries and in a variety of diameters

## Scope of delivery:

- Stainless steel flange
- Surface seal
- Fastenings

## Dimensions:

- Standard flange dimensions OD or  $\square_a$  equivalent to the corresponding wall sleeve ID + approx. 150 mm (for one entry; see the brochure for detailed information)
- Standard upper length: 80 mm

## Material:

- Flange: stainless steel V2A (AISI 304L) or V4A (AISI 316L)
- Surface seal: EPDM
- Fastenings: stainless steel V4A (AISI 316L)

## FEATURES

Wall sleeve/core drilled hole ID (mm):	300
Optimal application range OD (mm):	200 – 225
Max. possible application range $\varnothing$ (mm):	0 – 250
Wall sleeve wall thickness (mm) S:	2
Flange standard dimensions (mm):	$\varnothing$ 450

## PICTURES



# ACCESSORIES REQUIRED



EGO sealant