

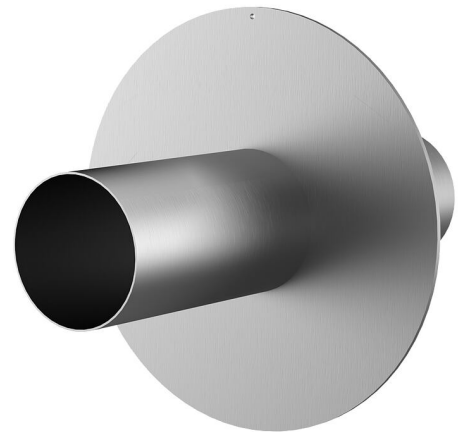
# Stainless steel wall sleeve with puddle flange

for setting in concrete

## FUM1x125/250/250 A2

Article no.: 911240000, GTIN: 4052487021609

Puddle flange serves as water barrier and creates a force-fit connection.



Picture may differ from selected product

## FACTS

### Advantages:

- Simple installation in the formwork
- Also available with multiple entries and in a variety of diameters, resulting in compact construction

### Scope of delivery:

- with closing covers on both sides

### Dimensions:

- Flange OD equivalent to the corresponding wall sleeve ID + approx. 210 mm (for one entry, see the brochure for detailed information)



## Properties:

- FHRK-certified

## Application range:

- Waterproof concrete stress class 1 and 2

## Material:

- Wall sleeve: stainless steel V2A (AISI 304L) or V4A (AISI 316L)
- Closing cover: PE

## Tightness:

- gastight and watertight

## FEATURES

|                                   |     |
|-----------------------------------|-----|
| Wall sleeve ID (mm):              | 125 |
| External diameter of flange (mm): | 329 |
| Wall sleeve wall thickness (mm):  | 2   |
| S:                                |     |
| Length (mm):                      | 500 |