

# Blind Plug

## TO25

Article no.: 3030315812, GTIN: 4052487228442



- **Easy installation and removal with just two moves**

For sealing unused core drills or wall sleeves.



Picture may differ from selected product

## FACTS

### Advantages:

- Longevity
- Reusable
- Protects unused openings against dirt and animals
- Available from stock

### Application range:

- DIN 18533 W1-E
- Waterproof concrete stress class 1, waterproof concrete stress class 2

### Material:

- EPDM

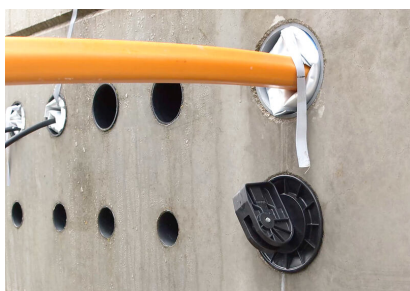
### Tightness:

- gastight and watertight to 0.5 bar

# FEATURES

Wall sleeve/core drilled hole ID (mm): 20-23  
Packing unit: 10

# PICTURES



**KONEKT** hauff-technik



**KONEKT** hauff-technik