

# Bellmouth Wall Sleeve

for setting in concrete

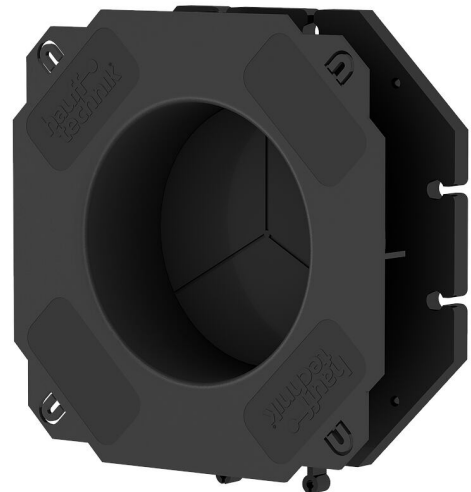
## BWS150/160

Article no.: 827030150, GTIN: 4052487196031



- **Frame connection system for creation of packages on site – compatible with all three sizes**
- **Easy adjustment to the wall thickness on site – using available cable ducts**

For installation flush with the formwork and use of standard press seals.



Picture may differ from selected product

## FACTS

### Advantages:

- Integrated bellmouth shape protects the cables from damage
- Blind plate for pressure tight seal immediately after concreting
- Trisection division of the blind plate for easy breaking through
- Patch flange for processing polymer modified bituminous thick coatings

### Properties:

- Middle flange serves as water barrier
- Lugs for secure fastening to the reinforcement with tie wire
- Nail lugs with break protection for attachment to the formwork

## Material:

- ABS

## Tightness:

- gastight and watertight to 1.0 bar, right after concreting

## FEATURES

D1	150
(mm):	
D2	160
(mm):	
D3	250
(mm):	
D4	120
(mm):	

## PICTURES

