

Always. Reliable. Tight.

# Bellmouth Wall Sleeve

for setting in concrete

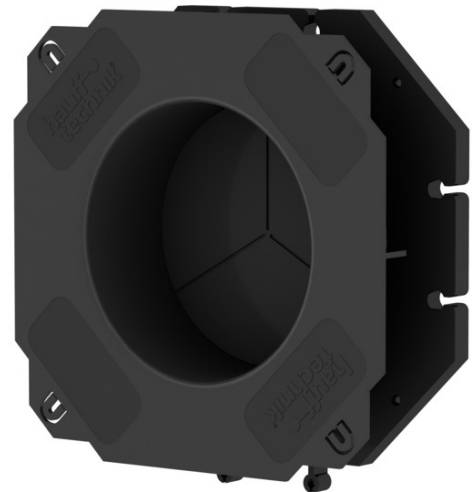
## BWS150/160

Article no.: 0827030150



- **Easy adjustment to the wall thickness on site – using available cable ducts**
- **Frame connection system for creation of packages on site – compatible with all three sizes**
- **Blind plate with break-through feature**

For installation flush with the formwork and use of standard press seals.



Picture may differ from selected product

## FACTS

### Advantages:

- Integrated bellmouth shape protects the cables from damage
- Blind plate ensures pressure tightness right after concreting
- Trisection division of the blind plate for easy breaking through
- Patch flange for processing polymer modified bituminous thick coatings

### Properties:

- Middle flange serves as water barrier
- Lugs for secure fastening to the reinforcement with tie wire
- Nail lugs with break protection for attachment to the formwork

## Material:

- ABS

## Tightness:

- Gastight and watertight up to 1 bar, right after concreting

## FEATURES

Wall sleeve ID (mm) d1:	150
Wall sleeve ID (mm) d2:	160
Patch flange OD (mm) d3:	250x250
Minimum wall thickness (mm) d4:	120

## PICTURES

