

Membrane injection system

for buildings with a basement

MIS100ND VT63

Article no.: 2900300800, GTIN: 4052487174299



- **No groundwork at the property**
- **Universal building entry with membrane injection system for drill holes in the most common types of wall**
- **Controlled ejection of resin through slit membrane hose**

For the reliable sealing of drinking water, power or telecommunications services. A drilling rocket is used to excavate a continuous empty conduit route from the basement of the building to the edge of the property.



Picture may differ from selected product

FACTS

Advantages:

- Can be fully installed from the inside of building
- Ideal for applications in which the building connection route has been built over or is difficult to access

Scope of delivery:

- 1 piece Octagonal inner sealing element
- 1 piece MIS 100/VT63 flange unit with sleeve pipe and connection sleeve
- 2 pieces self-tapping screws M8x45 and washers for sealing service lines
- Outer sealing element with injection hose
- 2 pieces twist protection flaps

Dimensions:

- For core drills: ID 99 - 103 mm
- For wall thicknesses: from 240 to 600 mm

Application range:

- DIN 18533 W1-E
- Waterproof concrete stress class 1, waterproof concrete stress class 2

Material:

- Front plate: glass fibre reinforced polyamide
- Sealing rubber, flange, seal insert and counter-bearing: EPDM
- Pipe: PVC-U
- Screws and washers: stainless steel V2A (AISI 304L)

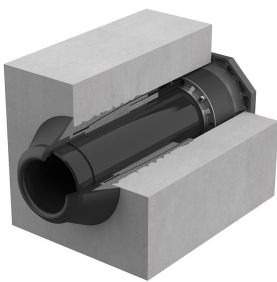
Tightness:

- gastight and watertight to 1.0 bar

FEATURES

wall thickness 240 -
(mm): 600

PICTURES



ACCESSORIES REQUIRED



2-component resin M3000



Lubricant



Assembly kit MIS NoDig