

Outer sealing element module 6.2

for single-line building entry systems basic variant 1

ESH PolySafe M6.2

Article no.: 1910000109, GTIN: 4052487163552



- **Tested according to DIN 18533**

Rubber compression seal with overlying flange for integration in existing damp-proofing in buildings with cellar. With a sealing width of 80 mm, module 6.2 is able to seal both the concrete formwork of the double wall/element wall and the in-situ concrete. Module 6.2 provides a seal against both the concrete shells of the double/element wall and the pre-mixed concrete filling. This prevents rising water in the area between the element wall and the concrete filling from penetrating the core drill hole.



Picture may differ from selected product

FACTS

Advantages:

- Can be installed easily and quickly on-site
- Integration of existing building seals to DIN 18195 Part 4

Dimensions:

- Core drill/wall sleeve ID: 99 - 103 mm
- Outer diameter of flange: 160 mm
- Sealing width: 80 mm

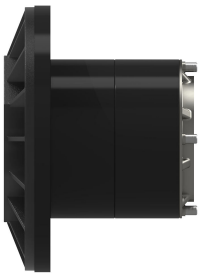
Application range:

- DIN 18533 W1-E, DIN 18533 W2.1-E
- Waterproof concrete stress class 1, waterproof concrete stress class 2

Material:

- Rubber: EPDM
- Flange: glass fibre reinforced polyamide
- Flange seal: foam rubber/NBR
- Press plates: stainless steel V2A (AISI 304L)
- Screws and washers: stainless steel V2A (AISI 304L)

PICTURES



ACCESSORIES REQUIRED



Basic variant with inner seal