

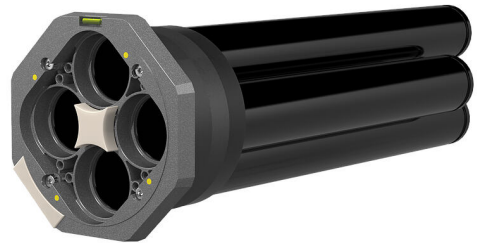
## Basic variant with inner seal for buildings with a basement

### MSH PolySafe GV2

Article no.: 1560000002, GTIN: 4052487162692



- **Testable reliability in double/element walls due to built-in leakage test facility**
- **Reliable installation due to front panel with integrated spirit level**
- **Visual installation reliability due to built-in inspection opening**



Picture may differ from selected product

Gasttight and watertight building entry for gas, water, power and telecommunications services. Basic variant 2 with internal sealing of 60 mm sealing width for installation in core drill holes in double/element walls. The relevant external sealing elements are available for different wall types and building damp-proofing types.

## FACTS

### Advantages:

- Seals all supply lines through one entry
- Continuous duct connection up to the main supply lines at the edge of the property possible
- Modular system provides the appropriate external sealing depending on load class, construction type and wall structure



## Scope of delivery:

- 1 piece Front panel in internal sealing
- 4 pieces sleeve pipes
- 1 piece Test valve (pre-mounted)
- 1 piece Movable spirit level (pre-assembled)
- 8 pieces self-tapping screws M8x45 for sealing service lines

## Dimensions:

- Sealing width: 60 mm
- Compatible with core drill/wall sleeve: ID: 199 - 203 mm
- Maximum wall thickness: 500 mm (special lengths on request)

## Properties:

- DVGW-certified
- To be supplemented with section sealing elements and one or more external sealing elements (depending on wall type and structure)
- In combination with Module 6 or Module 6.2 (external sealing element with 90 mm sealing surface with or without outer flange) creates a testable variant for use in double/element walls
- Can be optionally combined with connection elements and empty pipe system

## Application range:

- DIN 18533 W1-E, DIN 18533 W2.1-E
- Waterproof concrete stress class 1, waterproof concrete stress class 2

## Material:

- Inner seal: Fibre-glass reinforced polyamide/EPDM
- Sleeve pipes: PVC
- Screws: stainless steel V2A (AISI 304L)

## Tightness:

- gastight and watertight to 1.0 bar
- radon tight

## Tests/Standards:

- DVGW VP 601

## PICTURES

