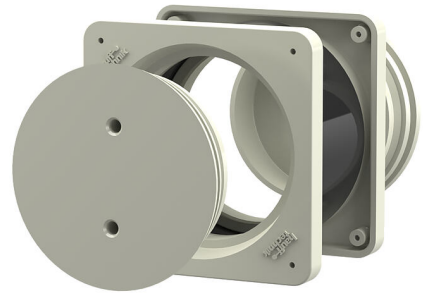


# Site power supply entry for secondary substations

## BD68 K2/250

Article no.: 302040000, GTIN: 4052487005135

For temporary power supply and/or emergency supply to secondary substations. With the site power supply entry, cables can be fed into the substation above ground while construction work is in progress. This means that the doors of the substation can be closed.



Picture may differ from selected product

## FACTS

### Advantages:

- Sealed ready for installation
- Can only be opened with a special tool, is protected against unauthorised opening
- Simple installation in the formwork

### Scope of delivery:

- 2 pieces closing covers

### Dimensions:

- Frame dimensions: 120x 120 mm

### Material:

- Connection frame: ABS
- Adapter pipe: PVC

## FEATURES

Clear width (mm): 68  
wall thickness  
(mm): 250

## ACCESSORIES REQUIRED



Flexible socket wrench