

# Single wall insert with plug-in socket

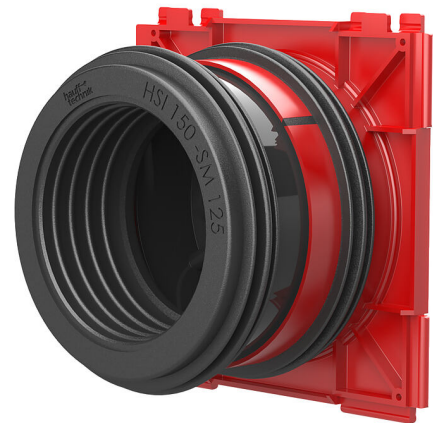
for setting in concrete and connecting smooth cable ducts

## HSI150 1x1 GSM125/400

Article no.: 3030303412, GTIN: 4052487223072



- **3-ribbed seal is sprayed on to create pressure-tight seal with concrete**
- **readily available for wall thicknesses 120 mm and above (GSM 110 and GSM 125)**
- **quality mark: sealed ex works. Option to check for accidental or unauthorised opening of the closing cover**



Picture may differ from selected product

For the connection of system seals for cables (inside) on one side and the connection of cable ducts (outside) on the other.

## FACTS

### Advantages:

- System seal can be connected on one side, there is also an integrated plug-in socket for the connection of smooth cable ducts
- Additional pipe connectors are not necessary
- Pressure-tight closing cover ensures absolute gastightness and watertightness even after the empty conduit has been connected

### Scope of delivery:

- 1 piece of pressure-tight closing cover



## Dimensions:

- Frame dimensions: 220x 220 mm
- Centre distance: 210 mm, spacer increases centre distance to 250 mm

## Properties:

- FHRK-certified
- The use of the HSI-AH 40 spacer is recommended, it must be used with the HSI150-GSM 160

## Application range:

- Waterproof concrete stress class 1 and 2

## Material:

- Wall insert: ABS with TPE 3-ribbed seal
- Adapter pipe: PVC
- Plug-in socket: EPDM
- Clamping strap for HSI150 GSM160/X: W4
- Closing cover: ABS with TPE seal
- Pipe cover: PE or sleeve cap: PVC

## Tightness:

- gastight and watertight to 0.5 bar
- radon tight

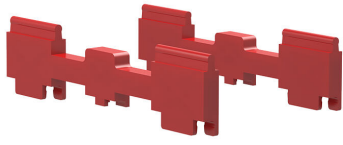
## FEATURES

Wall thickness (mm):	400
Tube Ø (mm):	125

## PICTURES



# ACCESSORIES REQUIRED



Spacer