

Double wall insert

for setting in concrete

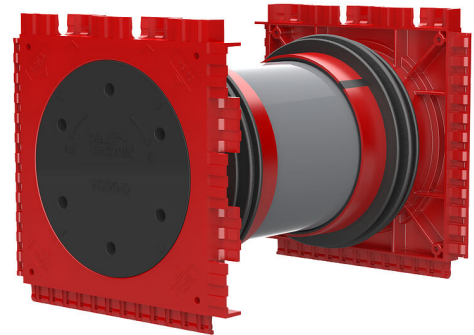
HSI90 1x1 K2/100

Article no.: 3030304960, GTIN: 4052487244015



- **injection molded 3-ribbed seal for pressure-tightness seal with concrete**

For gastight and watertight connection of system covers for sealing of cables and cable ducts on both sides and maximum flexibility in future use.



Picture may differ from selected product

FACTS

Advantages:

- System seal can be connected on both sides (e.g. cable duct connection and cable seal)
- Packages can be created with frame connection system, delivery ex works

Scope of delivery:

- 2 pieces of pressure-tight closing covers

Dimensions:

- Frame dimensions: 145x 145 mm (per wall insert)
- Centre distance: 135 mm
- Minimum wall thickness: 100 mm

Application range:

- Waterproof concrete stress class 1 and 2



Material:

- Wall insert: ABS with TPE 3-ribbed seal
- Adapter pipe: PVC
- Closing cover: ABS with EPDM seal

Tightness:

- gastight and watertight to 2.0 bar
- Radon-proof

FEATURES

Wall thickness
(mm): 100

PICTURES

