

Double wall insert

for setting in concrete

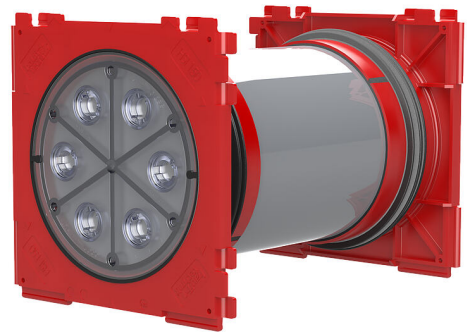
HSI150 1x1 K2/500

Article no.: 3030303445, GTIN: 4052487223256



- **3-ribbed seal is sprayed on to create pressure-tight seal with concrete**
- **Quality mark on both sides: sealed ex works. Option to check for accidental or unauthorised opening of the closing cover**

For the gastight and watertight connection on both sides of system seals for cables and cable ducts and maximum flexibility for subsequent use.



Picture may differ from selected product

FACTS

Advantages:

- System seal can be connected on both sides (e.g. cable duct connection and cable seal)
- Packages can be created with frame connection system, delivery ex works

Scope of delivery:

- 2 pieces pressure-tight closing covers

Dimensions:

- Frame dimensions: 220x 220 mm (per wall insert)
- Centre distance: 210 mm
- Minimum wall thickness: 100 mm



Properties:

- FHRK-certified
- For the duct connection $D_a=160$ mm, we recommend using the spacer HSI AH40 to extend the centre distance when installing multiple HSI150 wall inserts

Application range:

- Waterproof concrete stress class 1, waterproof concrete stress class 2

Material:

- Wall insert: ABS with TPE 3-ribbed seal
- Adapter pipe: PVC
- Closing cover: ABS with TPE seal

Tightness:

- gastight and watertight to 2.5 bar
- radon tight

FEATURES

wall thickness
(mm): 500

PICTURES

