

# Outer sealing element module 6

## for single-line building entry systems basic variant 1

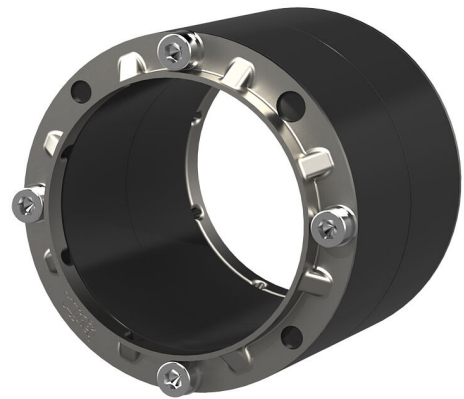
### ESH PolySafe M6

Article no.: 1900400020, GTIN: 4052487051026



- **optical and tangible installation security due to integrated control opening**

For sealing in core drills for double walls/element walls. With a sealing width of 80 mm, module 6 is able to seal both the concrete formwork of the double wall/element wall and the in-situ concrete. This prevents rising water in the area between the element wall and the concrete filling from penetrating the core drill hole.



Picture may differ from selected product

## FACTS

### Advantages:

- Can be installed easily and quickly on-site

### Dimensions:

- Core drill/wall sleeve ID: 99 - 103 mm
- Sealing width: 80 mm

### Application range:

- Waterproof concrete stress class 1, waterproof concrete stress class 2

## Material:

- Rubber: EPDM
- Press plates: stainless steel V2A (AISI 304L)
- Screws and washers: stainless steel V2A (AISI 304L)