

Earthing fixed point

with weld groove

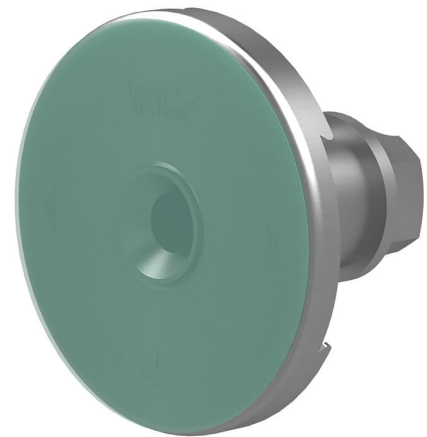
HEA A M12/70

Article no.: 1700300520, GTIN: 4052487131407



- **Patented twist resistance provided by special contour of contact washer**

For earthing connection via weld groove, for installation flush with formwork. An earthing connection can be made with the thread in the conductor core. The HEA-A is used primarily in prefabricated construction.



Picture may differ from selected product

FACTS

Advantages:

- Watertight connection thread (blind hole)
- Resistant to corrosion

Scope of delivery:

- 1 piece Heat-resistant protective foil

Dimensions:

- Conductor core: round, Ø 25 mm
- Contact washer: Ø 72 mm
- Groove for weld connection for round steel: 10 - 12 mm
- Distance between contact washer and weld groove: 40/50 or 70 mm

Application range:

- Waterproof concrete stress class 1

Material:

- Conductor core and contact washers: stainless steel V4A (AISI 316L)
- Weld connection with groove: St37

Tests/Standards:

- Short-circuit-tested to VDE 0101
- EN 50522

FEATURES

Distance shuttering - reinforcement: 70