

Outer sealing element module 8

for single-line building entry systems basic variant 1

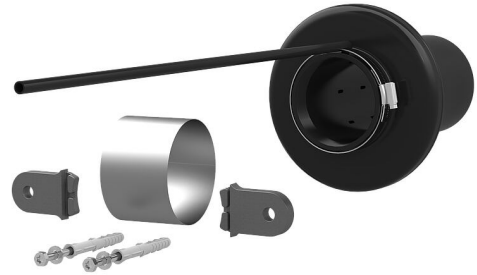
ESH PolySafe M8

Article no.: 2900300600, GTIN: 4052487130134



- **With membrane injection system for drill holes in the most common types of wall**
- **Controlled ejection of resin through slit membrane hose**

Outer sealing element for ESH Basic - BV 1 with membrane injection system for sealing buildings with a basement in the most common types of wall for use in core drills.



Picture may differ from selected product

FACTS

Advantages:

- Quick to assemble in just a few minutes
- Not necessary to restore basement seal to DIN 18533

Scope of delivery:

- Outer sealing element module 8
- 1 piece compensation pipe
- 2 pieces twist protection flaps
- 2 pieces frame plugs SXR 10 x 80

Dimensions:

- For core drills: ID 99 - 103 mm

Application range:

- DIN 18533 W1-E, DIN 18533 W2.1-E
- Waterproof concrete stress class 1, waterproof concrete stress class 2

Material:

- Flange, counter-bearing and membrane hose: EPDM
- Resin filler hose: PE
- Sealing tape: butyl

ACCESSORIES REQUIRED



Basic variant with inner seal



2-component resin M3000



Cartridge gun



Quick tensioning device MIS