

## System cover

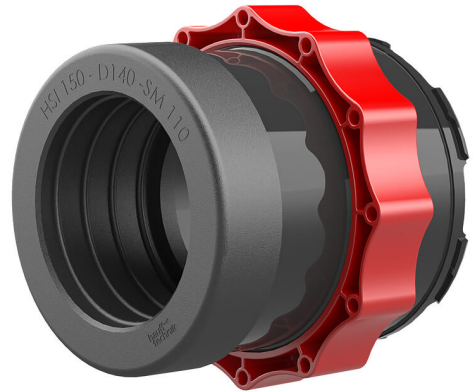
with plug-in socket for smooth cable ducts

### HSI150 D GSM



- **Mechanical fixing (bayonet) and seal (clamping nut) act independently**
- **Bayonet system with return lock and locking screw connection (for protection against automatic opening)**
- **Elastic plug-in connection with moulded rubber part (OD 110 and 125 mm)**

For use in wall insert and plastic flange HSI150. For connecting smooth cable ducts. The seal is created with the plug-in method.



Picture may differ from selected product

## FACTS

### Advantages:

- Quick plug-in installation without additional connection components

### Properties:

- FHRK-certified

### Material:

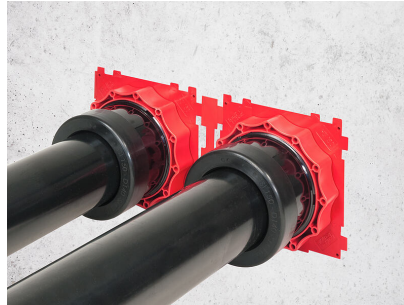
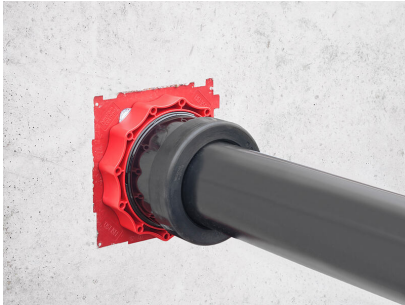
- System cover: polycarbonate
- Clamping nut: PC/PBT blend
- Plug-in socket: EPDM or plug-in sleeve: PVC-U



## Tightness:

- gastight and watertight to 0.5 bar

## PICTURES



## ACCESSORIES REQUIRED



Flexible socket wrench