

# Single wall insert with foldable rubber sleeve

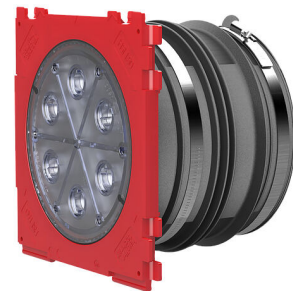
for setting in concrete and connecting corrugated cable ducts

HSI150 1x1 KMA172/180

: 3030491597, GTIN: 4052487242677



- thanks to the folding sleeve method, no additional pipe components are required
- elastic and firmly anchored connection thanks to increased insertion depth, even if the cable duct hose is deflected
- inside connection option for system seals for cables



## Advantages:

- defined insertion depth of the cable duct hose through stop in the sleeve
- Readily available for wall thicknesses 120 mm and above
- Quality mark: sealed ex works. Option to check for accidental or unauthorised opening of the closing cover
- Pressure-tight seal to the concrete through 3-ribbed seal, with two 3-ribbed seals from wall thicknesses of 150 mm and above



## Scope of delivery:

- 1 piece pressure-tight system cover HSI150 DTS
- 1 piece blind cover
- 2 pieces HSI150 AH40 spacer
- 1 piece Clamping strap
- when connecting corrugated cable ducts, clip rings must be ordered separately. When ordering, please specify tube type and producer.

## Dimensions:

- Frame dimensions: 220x 220 mm
- Centre distance with spacer: 250 mm

## Properties:

- FHRK-certified

## Application range:

- Waterproof concrete stress class 1, waterproof concrete stress class 2

## Material:

- Wall insert: ABS with TPE 3-ribbed seal
- Closing cover: ABS with TPE seal
- Adapter pipe: PVC
- Sleeve: EPDM
- Clamping straps: W4
- Blind cover: PP

## Tightness:

- gastight and watertight to 2.5 bar
- radon tight

wall thickness (mm):	180
Pipe OD:	172

