

# ETGAR building package for multi-line building service outlets

for buildings with a basement

## HAW-M ETGAR BHP

: 3030458211, GTIN: 4052487239943



- **Complete system for distributing the power supply to the entire property from the building connection room**
- **Integrated leak test equipment**

For routing and distributing electric power and communication lines from the building to the property's surrounding grounds.



### Advantages:

- Complete package with connection options for the ETGAR corrugated pipe
- Combinable with the products of the ETGAR garden distribution range
- Visual and tangible installation reliability thanks to built-in inspection openings
- Reliable installation due to front panel with integrated spirit level

### Scope of delivery:

- Basic component for installation in ETGAR wall sleeve
- Insulating plate for integrating the building insulation in the area of the building services outlet
- 2 pieces ETGAR sealing elements 1x13-21+3x7-13+1x5-13
- 2 pieces ETGAR sealing elements 1x26-30+3x5-8+2x7-13
- 16-piece corrugated pipe connection set (4 double sleeves DN75 + 12 profile seals DN75) RAS16

## Dimensions:

- Compatible with ETGAR wall sleeve, ID: 200 mm
- maximum wall thickness: 500 mm

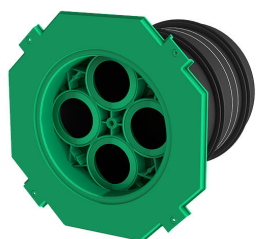
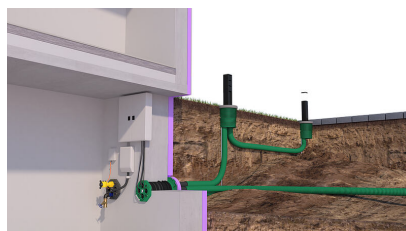
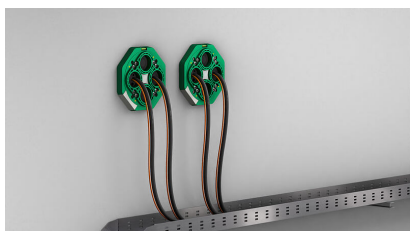
## Application range:

- DIN 18533 W1-E, DIN 18533 W2.1-E
- Waterproof concrete stress class 1, waterproof concrete stress class 2

## Tightness:

- gastight and watertight to 1.0 bar

Packing unit: 6



ETGAR wall sleeve for building  
services outlet