

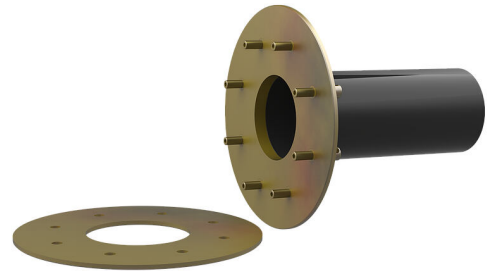
# Fixed/loose flange wall sleeve galvanised

for setting in concrete for black tank

FLFE1x200/200 DIN18533 St-A3C

: 3030353471, GTIN: 4052487226998

For setting in concrete or mortar in walls, ceilings or floors.



## Advantages:

- flexible wall thickness adjustment thanks to plastic wall sleeve
- Installation flush with formwork

## Scope of delivery:

- 1 piece Fixed/loose flange wall sleeve
- Fastenings for concrete
- Bolts and nuts
- 2 pieces closing covers

## Dimensions:

- for wall thicknesses of up to 500 mm
- Design according to DIN 18533 includes: underground structural components
- Standard fixed flange  $\varnothing a$  equal to the relevant wall sleeve  $\varnothing i$  + approx. 330 mm (for one passage)

## Application range:

- DIN 18533 W2.1-E, DIN 18533 W2.2-E

## Material:

- Fixed/loose flange wall sleeve steel galvanised (gv)
- Wall sleeve: plastic PVC-U
- Closing cover: PE
- Bolts and nuts: steel galvanised (gv)

## Tightness:

- gastight and watertight

Wall sleeve ID (mm) D1:	200
Fixed flange OD (mm) D2:	530
Loose flange OD (mm) D3:	520
Wall sleeve wall thickness (mm) S:	2
wall thickness (mm):	200



Rubber inlays