

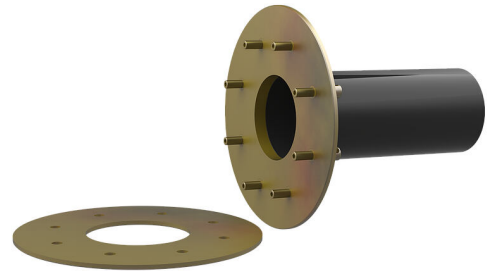
Fixed/loose flange wall sleeve galvanised

for setting in concrete for black tank

FLFE1x150/250 DIN18533 St-FVZ

: 3030453923, GTIN: 4052487242592

For setting in concrete or mortar in walls, ceilings or floors.



Advantages:

- flexible wall thickness adjustment thanks to plastic wall sleeve
- Installation flush with formwork

Scope of delivery:

- 1 piece Fixed/loose flange wall sleeve
- Fastenings for concrete
- Bolts and nuts
- 2 pieces closing covers

Dimensions:

- for wall thicknesses of up to 500 mm
- Design according to DIN 18533 includes: underground structural components
- Standard fixed flange $\varnothing a$ equal to the relevant wall sleeve $\varnothing i$ + approx. 330 mm (for one passage)

Application range:

- DIN 18533 W2.1-E, DIN 18533 W2.2-E

Material:

- Fixed/loose flange wall sleeve steel galvanised (gv)
- Wall sleeve: plastic PVC-U
- Closing cover: PE
- Bolts and nuts: steel galvanised (gv)

Tightness:

- gastight and watertight

| | |
|---------------------------------------|-----|
| Wall sleeve ID (mm) D1: | 150 |
| Fixed flange OD (mm) D2: | 475 |
| Loose flange OD (mm) D3: | 465 |
| Wall sleeve wall thickness (mm) S: | 2 |
| wall thickness (mm): | 250 |



Rubber inlays