

# Membrane injection system

## for buildings without a basement

### MIS60S 1x24-30 BL1300 Set10

: 3030380184, GTIN: 4052487229715



- **Universal building entry with membrane injection system for sloping drill holes through floor slabs or walls**
- **Controlled ejection of resin through slit membrane hose**
- **Sealing lips ensure gentle seal for media lines**



Suitable for sloping entry through the wall or floor slab.

### Advantages:

- Quick to assemble in just a few minutes
- Not necessary to restore basement seal to DIN 18533
- Variety of pre-mounted seal inserts for variable configuration

### Scope of delivery:

- 1 packing unit:
- 10 pieces MIS 60S
- 10 pieces wall terminator element (only for communication variant)
- 10 pieces wall collar (only with electricity variant)
- 10 pieces 2-component resin RESINATOR, 150 ml
- 1 piece quick tensioning device MIS60 SVS

## Dimensions:

- For core drills  $\varnothing$ : 62 - 65 mm
- Overall length: 1300 mm

## Application range:

- DIN 18533 W1-E
- Waterproof concrete stress class 1, waterproof concrete stress class 2

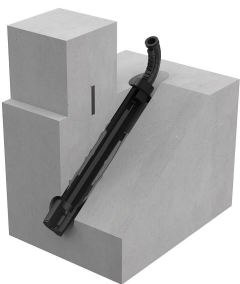
## Material:

- Flange, seal insert, counter-bearing and adapter: EPDM
- Resin filler hose: PE
- Wall collar: PE
- Pipe: PVC-U
- Wall terminator element: Flame-retardant polycarbonate
- Fast arrangement fixture: glass fibre reinforced polyamide/ABS

## Tightness:

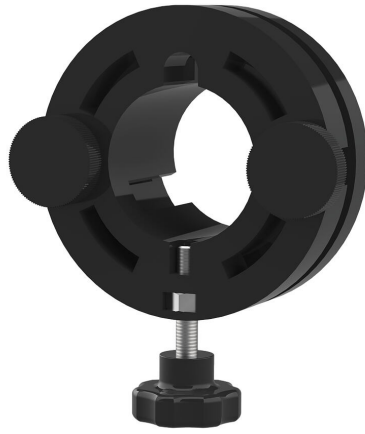
- gastight and watertight to 1.0 bar

Number of cables/medium:	1
Suitable for medium pipe OD (mm):	24 - 30
Overall length (mm):	1300
wall thickness (mm):	200 - 1.200





Cartridge gun



Quick tensioning device