

# Membrane injection system

for buildings with a basement

## MIS60D 4x5-7 BL1000 Set10

: 3030380170, GTIN: 4052487229852



- **Universal building entry with membrane injection system for drill holes in the most common types of wall**
- **Controlled ejection of resin through slit membrane hose**
- **Sealing lips ensure gentle seal for media lines**



For existing buildings with a basement for reliable sealing of standard water lines.

### Advantages:

- Quick to assemble in just a few minutes
- Not necessary to restore basement seal to DIN 18533
- Variety of seal inserts for variable configuration



### Scope of delivery:

- 1 packing unit:
- 10 pieces MIS 60D including pre-mounted seal insert
- 10 pieces wall terminator element (only for communication variant)
- 10 pieces wall collar (only with electricity variant)
- 10 pieces 2-component resin RESINATOR, 150 ml
- 1 piece quick tensioning device MIS60 SVS

## Dimensions:

- For core drills  $\varnothing$ : 62 - 65 mm
- For wall thicknesses: from 200 to 1200 mm

## Application range:

- DIN 18533 W1-E, DIN 18533 W2.1-E
- Waterproof concrete stress class 1, waterproof concrete stress class 2

## Material:

- Flange, seal insert, counter-bearing and adapter: EPDM
- Sealing tape: butyl
- Resin filler hose: PE
- Wall collar: PE
- Pipe: PVC-U
- Wall terminator element: Flame-retardant polycarbonate
- Fast arrangement fixture: glass fibre reinforced polyamide/ABS

## Tightness:

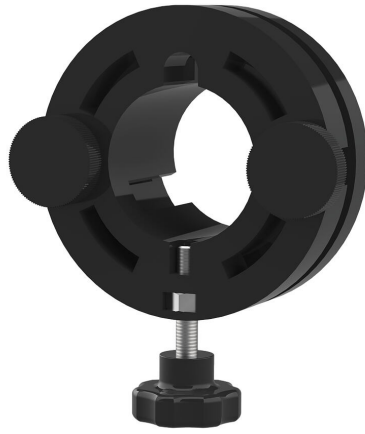
- gastight and watertight to 1.0 bar
- radon tight

Number of cables/medium:	4
Suitable for medium pipe OD (mm):	5 - 7
Overall length (mm):	1000
wall thickness (mm):	200 - 900





Cartridge gun



Quick tensioning device