

Fibre optic building entry

for buildings without a basement

GFH30 PRO



- **universal building entry with injection system for drill holes in the most common types of wall**
- **enables horizontal or angled installation up to a 45° angle**
- **gentle sealing of fibre optic cables using sealing lips**



Picture may differ from selected product

For reliable sealing of fibre optic cables.

FACTS

Advantages:

- Quick to assemble in just a few minutes
- Not necessary to restore basement seal to DIN 18533

Scope of delivery:

- 1 piece of GFH30
- 1 piece of wall terminator element
- 1 piece of 2-component resin RESINATOR, 80 ml
- 1 piece of mixing nozzle

Dimensions:

- Application range: 2 fibre-optic cables with Ø 7-10 mm or 1 fibre-optic cable with Ø 6 - 13 mm or 1 fibre-optic cable with Ø 12 - 16 mm
- for drill holes: ID 30 mm
- For wall thicknesses starting from 200 mm

Application range:

- Water exposure class DIN 18533: W1-E and W2.1-E
- Waterproof concrete stress class 1 and 2

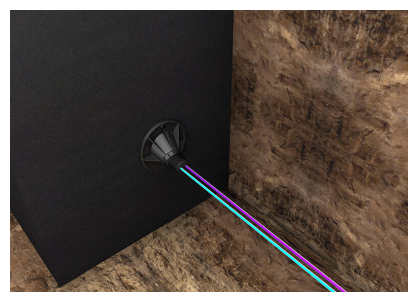
Material:

- Flange and punching pin: ABS
- Ball insert: EPDM
- Sealing tape: butyl
- Corrugated pipe: PE

Tightness:

- gastight and watertight to 1.0 bar

PICTURES



ACCESSORIES REQUIRED



Cartridge gun