

# Fibre optic building entry

## for buildings without a basement

### GFH30 1x12-16 PRO

: 3030535888, GTIN: 4052487244732



- **Universal building entry with injection system for drill holes in the most common types of wall**
- **Enables horizontal or oblique installation up to a 45° angle**
- **Low-impact sealing of fibre optic cables by means of sealing lips**



For reliable sealing of fibre optic cables.

#### Advantages:

- Quick to assemble in just a few minutes
- Not necessary to restore basement seal to DIN 18533

#### Scope of delivery:

- 1 piece GFH30
- 1 piece wall terminator element
- 1 piece 2-component resin RESINATOR, 80 ml
- 1 piece mixing nozzle

#### Dimensions:

- Area of application: 2 fibre-optic cables with  $\varnothing$ a 7-10 mm or 1 fibre-optic cable with  $\varnothing$ a 6 - 13 mm or 1 fibre-optic cable with  $\varnothing$ a 12 - 16 mm
- for drill holes: ID 30 mm
- For wall thicknesses starting from 200 mm

## Application range:

- DIN 18533 W1-E, DIN 18533 W2.1-E
- Waterproof concrete stress class 1, waterproof concrete stress class 2

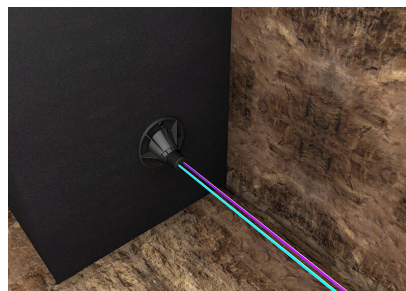
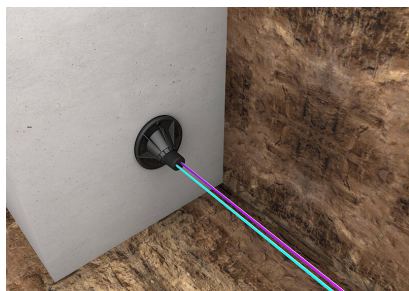
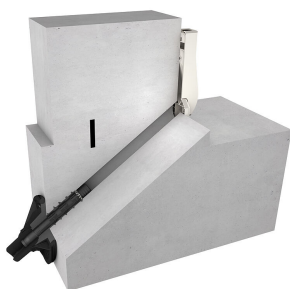
## Material:

- Flange and punching pin: ABS
- Ball insert: EPDM
- Sealing tape: butyl
- Corrugated pipe: PE

## Tightness:

- gastight and watertight to 1.0 bar

Number of cables/medium: 1  
Suitable for medium pipe OD (mm): 12-16



Cartridge gun