

# Foil sleeve

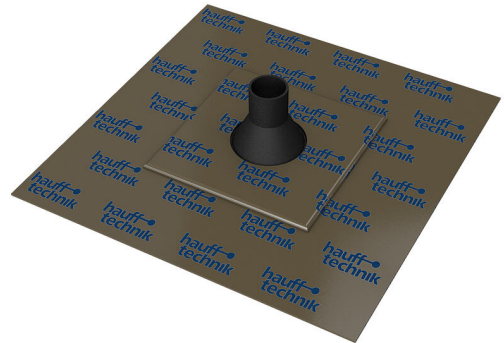
for entries through the floor slab

## HFM 1x8-12

: 3030370204, GTIN: 4052487227988



- **easy integration of the vapour barrier or radon foil**
- **prevents convection and the resulting ingress of radon gas into the building**



Hauff foil sleeve for secure connection of entries through the slab to a vapour barrier, radon foil or other sheet-type seal on the slab.

### Advantages:

- quick and easy installation
- excellent adhesive strength

### Application range:

- DIN 18533 W1-E
- Waterproof concrete stress class 1, waterproof concrete stress class 2

### Material:

- Foil flange: Aluminium-plastic composite foil with butyl rubber
- Rubber insert: EPDM

### Tightness:

- gastight
- radon tight

Number of cables/medium:	1
Area of application cable OD (mm):	8-12
Size (mm):	150 x 150 mm

