

Foil sleeve

for entries through the floor slab

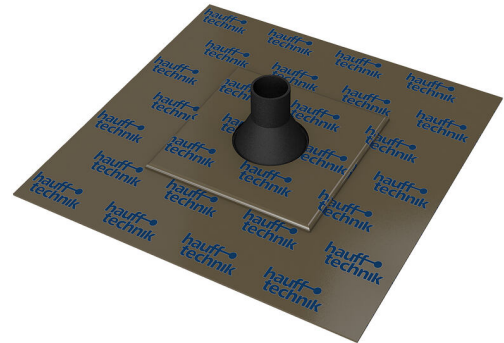
HFM 1x8-12

Article no.: 3030370204, GTIN: 4052487227988



- **easy integration of the vapour barrier or radon foil**
- **prevents convection and the resulting ingress of radon gas into the building**

Hauff foil sleeve for secure connection of entries through the slab to a vapour barrier, radon foil or other sheet-type seal on the slab.



Picture may differ from selected product

FACTS

Advantages:

- can be installed easily and quickly on-site
- excellent adhesive strength

Application range:

- Water exposure class DIN 18533: W1-E
- Waterproof concrete stress class 1, waterproof concrete stress class 2

Material:

- Foil flange: Aluminium-plastic composite foil with butyl rubber
- Rubber insert: EPDM

Tightness:

- gastight
- radon tight

FEATURES

Number of cables/medium:	1
Size (mm):	150 x 150 mm

PICTURES

