

Fibre optic building entry

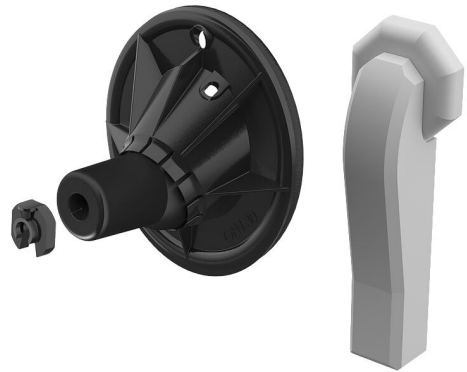
for buildings without a basement

GFH20 1x12-16 PRO

: 2900001315, GTIN: 4052487209861



- **Universal building entry with injection system for drill holes in the most common types of wall**
- **Enables horizontal or oblique installation up to a 45° angle**
- **Low-impact sealing of fibre optic cables by means of sealing lips**



For reliable sealing of fibre optic cables.

Advantages:

- Quick to assemble in just a few minutes
- Small opening diameter Øi 20 mm

Scope of delivery:

- 1 piece GFH20
- 1 piece Hauff RESINATOR 2-component resin, 80 ml
- 1 piece mixing nozzle
- 1 piece wall terminator element
- Suitable number of pipe clamps, depending on variant

Dimensions:

- Area of application: 2 fibre-optic cables with $\varnothing a$ 7-10 mm or 1 fibre-optic cable with $\varnothing a$ 6 - 13 mm or 1 fibre-optic cable with $\varnothing a$ 12 - 16 mm
- for drill holes $\varnothing i$: 20 mm
- for wall thicknesses starting from 100 mm

Application range:

- DIN 18533 W1-E, DIN 18533 W2.1-E
- Waterproof concrete stress class 1, waterproof concrete stress class 2

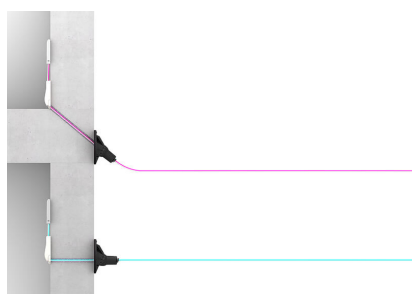
Material:

- Flange: ABS
- Ball insert: EPDM
- Sealing tape: Butyl
- Mounting disc: PA
- Pipeklemme: ABS

Tightness:

- gastight and watertight to 1.0 bar

Number of cables/medium:	1
Suitable for medium pipe OD (mm):	12 - 16





Cartridge gun