

# Membrane injection system

for buildings with a basement

MIS90D 1x24-40+3x7-13+2x5-8+2x7 K SET

: 3030300143, GTIN: 4052487113960



- **Universal building entry with membrane injection system for drill holes in the most common types of wall**
- **Controlled ejection of resin through slit membrane hose**
- **Simultaneous sealing of power and communication services**



For reliable sealing of all electricity and telecommunications lines without additional shrinking using a sealing sleeve.

## Advantages:

- Quick to assemble in just a few minutes
- Not necessary to restore basement seal to DIN 18533
- Flexibility provided by sealing sleeve with segmented ring technology

## Scope of delivery:

- 1 packing unit:
- 6 pieces MIS 90 including pre-mounted sleeve cap
- 6 pieces wall collars

## Dimensions:

- For core drills ID: 92 - 102 mm

## Application range:

- DIN 18533 W1-E, DIN 18533 W2.1-E
- Waterproof concrete stress class 1, waterproof concrete stress class 2

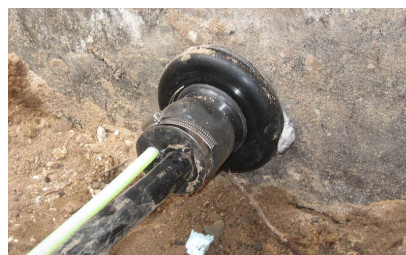
## Material:

- Flange, counter-bearing, sleeve cap, wall rosette, membrane hose: EPDM
- Resin filler hose: PE
- Pipe: PVC-U
- Sealing tape: butyl
- Stainless steel clamping straps: V2A (AISI 304L)

## Tightness:

- gastight and watertight to 1.0 bar

Number of cables/medium overall:	8
	1
	3
Number of cables/medium:	2
	2
	24-40
Suitable for medium pipe OD	7-13
(mm):	5-8
	7
Overall length (mm):	1000
wall thickness (mm):	200 -
	900
Packing unit:	1





2-component resin M3000



Cartridge gun



Quick tensioning device