

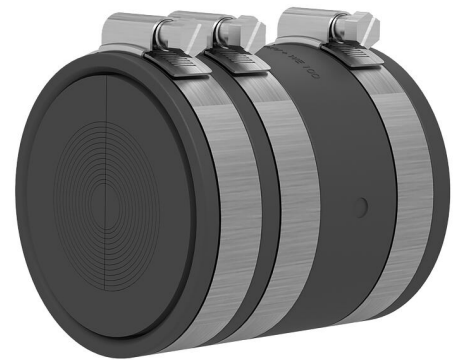
Sealing set interchangeable insert

for cable seal at the end of the spiral hose

KES90 MA90-102/90-102 WE100 SG 1x18-65

: 2225817101, GTIN: 4052487164726

Sealing set with sleeve KES-M 90-WE including split interchangeable insert with segment ring technology for sealing cables with rubber compression seal at the end of Hateflex spiral tube 14090.



Advantages:

- Segmented ring technology for adjustment to three or five different pipe diameters on site
- The interchangeable insert is installed after the cables have been laid
- The entire cross-section of the empty conduit system is used when cables are laid

Scope of delivery:

- Blind plugs
- Sleeve with clamping straps: KES-M 90-WE

Dimensions:

- Sealing width interchangeable insert: 60 mm
- Interchangeable insert: OD 100 mm
- Maximum assignment according to area of application

Material:

- Sleeve: EPDM
- Clamping straps: W4
- Interchangeable insert: EPDM

Tightness:

- gastight and watertight to 0.5 bar

Item: Abdichtset Wechseleinsatz

