

# Compensating pipe seal with segmented rings

## ADM200 90/110/125/140/160

Article no.: 1400061200, GTIN: 4052487126526



- **absorption of radial and axial movements**
- **Segmented ring technology for adjustment on-site to pipe diameters**

For fixing in front of core drills, openings or wall sleeves or in front of cut-outs in sheet metal housings. The waterproofing of the wall can easily be integrated due to the design of the product. The same product also seals the incoming pipe.



Picture may differ from selected product

## FACTS

### Advantages:

- Flexible arrangement of pipes in core drills/break-throughs or cut-outs

### Scope of delivery:

- Fixing elements including sealing ring

### Dimensions:

- Flang all around: 30mm
- Outer diameter ADM150: 290 mm
- Outer diameter ADM200: 340 mm

## Application range:

- Water exposure class DIN 18533: W1-E and W2.1-E
- Waterproof concrete stress class 1 and 2

## Material:

- Sealing sleeve: EPDM
- Fixing ring: stainless steel V2A (AISI 304L)
- Clamping straps: stainless steel V2A (AISI 304L)
- Fastenings: stainless steel V4A (AISI 316L)

## Tightness:

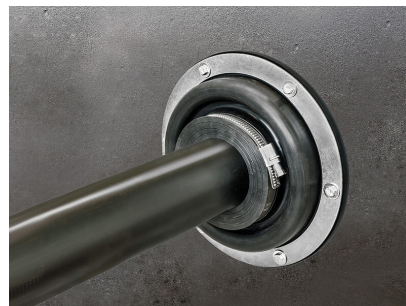
- gastight and watertight

## FEATURES

suitable for medium pipe OD (mm): 90/110/125/140/160

Wall sleeve/core drilled hole ID (mm): 200

## PICTURES



# ACCESSORIES REQUIRED



EGO sealant