

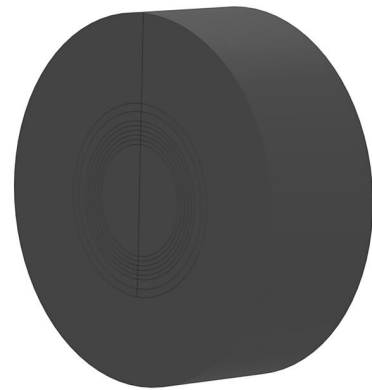
# Split interchangeable insert with segment ring technology

for cable seal at the end of the spiral hose

## WE160 SG 1x48-83

: 825817116, GTIN: 4052487164719

For installation in the KES150 MA WE sleeve and to seal cables with the rubber press method at the end of the Hateflex spiral hose 14150.



### Advantages:

- Segmented ring technology for adjustment to three or five different pipe diameters on site
- The interchangeable insert is installed after the cables have been laid
- The entire cross-section of the empty conduit system is used when cables are laid

### Scope of delivery:

- Blind plugs

### Dimensions:

- OD: 160 mm
- Sealing width: 60 mm
- Maximum configuration: according to variant table

## Material:

- EPDM

## Tightness:

- gastight and watertight to 2.5 bar

Number of cables/medium: 1  
Area of application cable OD (mm): 48 - 83



Toolset for KES-M