

## Wall entry pipe bend 160 for district heating lines

MSH Basic FUBO-FIX RB160 r1000

: 1900500160, GTIN: 4052487157438

For the feeding in and sealing of district heating supply lines through the floor slab. Positioning with separately available clip system on the district heating installation fixture and combination with spiral hose system and sealing elements.



### Scope of delivery:

- 1 piece Pipe bend Øi 160 mm
- 1 piece Wall sleeve Øi 150 mm, partially coated L=650 mm

## Dimensions:

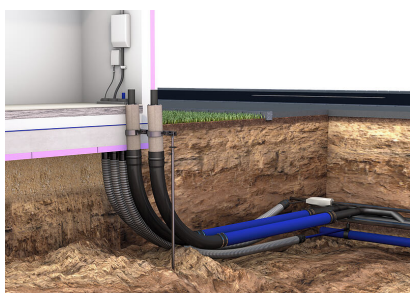
- Pipe bend radius: max. 1,000 mm

## Application range:

- DIN 18533 W1-E
- Waterproof concrete stress class 1, waterproof concrete stress class 2

## Material:

- PVC



Installation fixture



Fastening bracket 160