

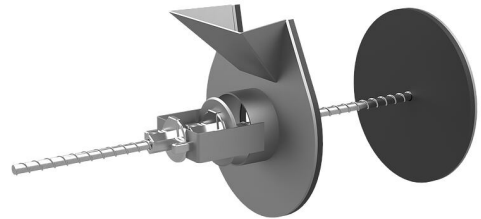
Compound injection unit

for the wet installation of wall sleeves

VFV300

Article no.: 3030610744, GTIN: 4052487248594

Used for retrofit wet installation of wall sleeves (SFR) in core drills or break-throughs.



Picture may differ from selected product

FACTS

Advantages:

- Can be used in buildings with sealing to DIN 18195 Part 4
- Can be installed projecting on the outside in order to accommodate a channel
- Easy adjustment to the wall thickness on site

Application range:

- Water exposure class DIN 18533: W1-E

FEATURES

Suitable for: ZVR300/X