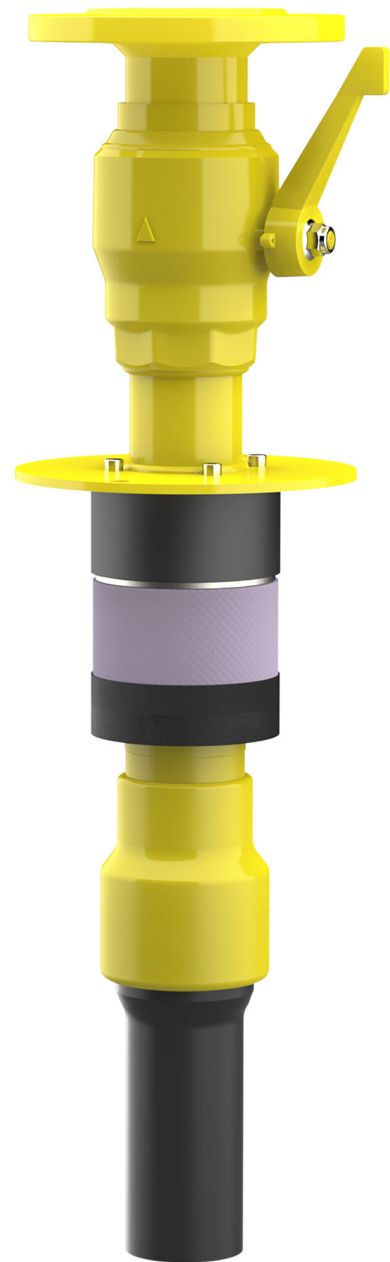


## Combined building entry for gas for buildings without a basement

HS SKDRVGTN-PESS-PE100-TE DN50 BL550

: 1990500120, GTIN: 4052487054195

Combined building entry for gas manufactured by Schuck, DN 50,  
for use in basic insert ADS 100 - FUBO - DN 50.



### **Advantages:**

- quick and easy installation
- Dry installation

### **Scope of delivery:**

- 1 piece Combined building entry for gas manufactured by Schuck, DN 50, includes protection against pulling out and twisting and pre-assembled sealing elements

### **Dimensions:**

- Seal insert OD: 100 mm

### **Application range:**

- Waterproof concrete stress class 1, waterproof concrete stress class 2

### **Material:**

- Seal insert: stainless steel V2A (AISI 304L)
- Rubber: EPDM

### **Tightness:**

- gastight and watertight to 1.0 bar