

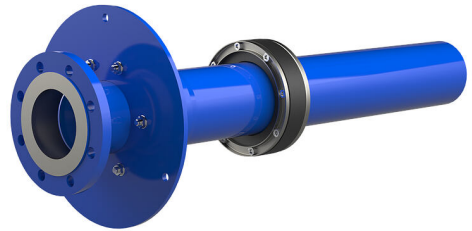
Combined building entry for water

for buildings with a basement

ROKA WF-TE-ARO DN100/110 BL960

: 1990800090, GTIN: 4052487054461

Combined building entry for water manufactured by Schuck, DN 100, for use in core drills or wall sleeves ID 200 mm.



Advantages:

- quick and easy installation
- Dry installation

Scope of delivery:

- 1 piece Combined building entry for water manufactured by Schuck, DN 100, includes protection against pulling out and twisting and pre-assembled sealing elements

Dimensions:

- Core drill/wall sleeve ID: 200 mm
- Wall thickness: 240 - 700 mm

Application range:

- Waterproof concrete stress class 1, waterproof concrete stress class 2

Material:

- Seal insert: stainless steel V2A (AISI 304L)
- Rubber: EPDM

Tightness:

- gastight and watertight to 1.0 bar

