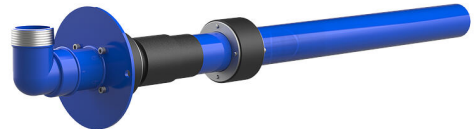


# Combined building entry for water

## for buildings with a basement

### HS W-PE-AG-90°-ARO DN50 R2 BL1000

: 1990500145, GTIN: 4052487054256



Combined building entry for water manufactured by Schuck, DN 50, for use in core drills or wall sleeves ID 100 mm.

#### Advantages:

- quick and easy installation
- Dry installation

#### Scope of delivery:

- 1 piece Combined building entry for water manufactured by Schuck, DN 50, includes protection against pulling out and twisting and pre-assembled sealing elements

#### Dimensions:

- Core drill/wall sleeve ID: 100 mm
- Wall thickness: 240 - 700 mm

#### Application range:

- Waterproof concrete stress class 1, waterproof concrete stress class 2

#### Material:

- Seal insert: stainless steel V2A (AISI 304L)
- Rubber: EPDM

#### Tightness:

- gastight and watertight to 1.0 bar

