

Double wall insert

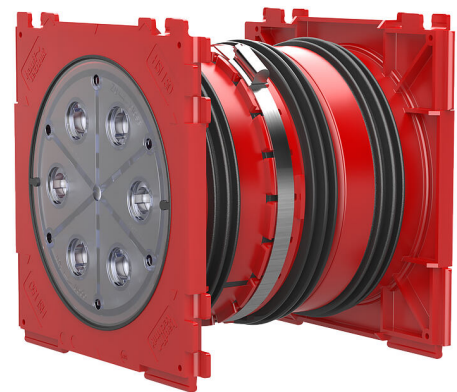
adjustable length, for setting in concrete

HSI150 1x1 K2 Varia 365-470

: 3030300086, GTIN: 4052487140430



- **Stepless adjustment to the required wall thickness on site**
- **In total, three spray applications of 3-ribbed seal are applied to create a pressure-tight seal with the concrete**
- **Quality mark on both sides: sealed ex works. Option to check for accidental or unauthorised opening of the closing cover**



For the gastight and watertight connection on both sides of system seals for cables and cable ducts and maximum flexibility for subsequent use.

Advantages:

- System seal can be connected on both sides (e.g. cable duct connection and cable seal)
- Packages can be created with frame connection system on site
- Can be used in all types of wall including element constructions



Scope of delivery:

- 2 pieces pressure-tight closing covers
- 1 piece Hex key with integrated torque limitation

Dimensions:

- Frame dimensions: 220x 220 mm
- Centre distance: 210 mm
- Minimum wall thickness: 200 mm

Application range:

- Waterproof concrete stress class 1, waterproof concrete stress class 2

Material:

- Wall insert: ABS with TPE 3-ribbed seal
- Adapter pipe: PVC
- Clamping strap: Steel St sn (W1)
- Closing cover: ABS with TPE seal

Tightness:

- gastight and watertight to 2.5 bar
- radon tight

wall thickness (mm):	365-470
Packing unit:	1

