

# Double wall insert

for setting in concrete

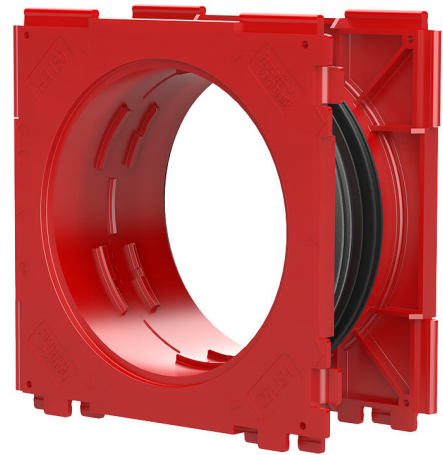
## HSI150 1x1 K2/110

: 3030318963, GTIN: 4052487243926



- **3-ribbed seal is sprayed on to create pressure-tight seal with concrete**
- **Quality mark on both sides: sealed ex works. Option to check for accidental or unauthorised opening of the closing cover**

For the gastight and watertight connection on both sides of system seals for cables and cable ducts and maximum flexibility for subsequent use.



### Advantages:

- System seal can be connected on both sides (e.g. cable duct connection and cable seal)
- Packages can be created with frame connection system, delivery ex works



### Scope of delivery:

- 2 pieces pressure-tight closing covers

### Dimensions:

- Frame dimensions: 220x 220 mm (per wall insert)
- Centre distance: 210 mm
- Minimum wall thickness: 100 mm

## Properties:

- FHRK-certified
- For the duct connection Da=160 mm, we recommend using the spacer HSI AH40 to extend the centre distance when installing multiple HSI150 wall inserts

## Application range:

- Waterproof concrete stress class 1, waterproof concrete stress class 2

## Material:

- Wall insert: ABS with TPE 3-ribbed seal
- Adapter pipe: PVC
- Closing cover: ABS with TPE seal

## Tightness:

- gastight and watertight to 2.5 bar
- radon tight

wall thickness  
(mm): 110

