

Assignment template for SEGMENTO

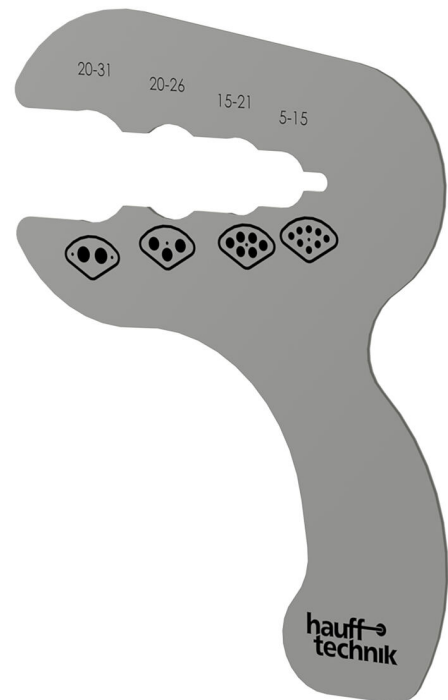
BSS

: 2300320000, GTIN: 4052487062244



- **Precise assignment of cables to the required segments**

For easier assignment of cables to segments (SEG). A vernier calliper no longer has to be used to calculate the cable diameters. The segment to be used is displayed in the form of a pictogram.



Advantages:

- Easy and clear handling
- Required segment are displayed as pictogram

Material:

- Stainless steel V2A (AISI 304L)