

# Earthing fixed point with weld groove

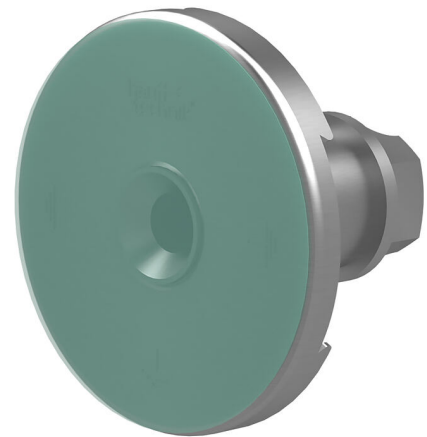
## HEA A M12/50

: 1700300500, GTIN: 4052487124140



- **Patented twist resistance provided by special contour of contact washer**

For earthing connection via weld groove, for installation flush with formwork. An earthing connection can be made with the thread in the conductor core. The HEA-A is used primarily in prefabricated construction.



### Advantages:

- Watertight connection thread (blind hole)
- Resistant to corrosion

### Scope of delivery:

- 1 piece Heat-resistant protective foil

### Dimensions:

- Conductor core: round,  $\varnothing$  25 mm
- Contact washer:  $\varnothing$  72 mm
- Groove for weld connection for round steel: 10 - 12 mm
- Distance between contact washer and weld groove: 40/50 or 70 mm

## Application range:

- Waterproof concrete stress class 1

## Material:

- Conductor core and contact washers: stainless steel V4A (AISI 316L)
- Weld connection with groove: St37

## Tests/Standards:

- Short-circuit-tested to VDE 0101
- EN 50522

Distance shuttering - reinforcement: 50