

Earthing entry

with terminal lug and cross-clamp

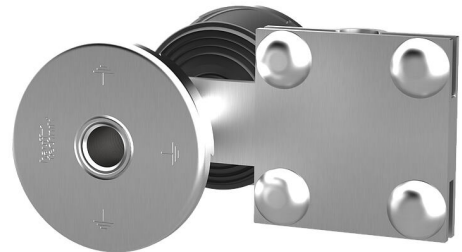
HEA PK M12/500

: 1700030500, GTIN: 4052487136631



- **Patented twist resistance provided by special contour of contact washer**

For installation flush with the formwork in waterproof concrete. Earthing connections can be made on the inside and outside with the thread on both sides in the conductor core. There is a tab with cross-clamp for making an earthing connection in the wall.



Advantages:

- Water barrier for tightness with concrete
- Watertight connection thread on both sides (blind hole)
- Resistant to corrosion

Scope of delivery:

- 1 piece Cross-clamp for connecting reinforcement/concrete-footing earth
- 2 pieces Protective covers with 4 nail holes

Dimensions:

- Conductor core: round, \varnothing 25 mm
- Conductor core link: with M16 threaded bolt
- Contact washer: \varnothing 72 mm

Application range:

- Waterproof concrete stress class 1, waterproof concrete stress class 2

Material:

- Conductor core and contact washers: stainless steel V4A (AISI 316L)
- Conductor core link: St37, galvanised
- Water barrier: NBR
- Protective covers: PE
- Terminal lug with cross-clamp: St37

Tests/Standards:

- DIN 18014
- DIN EN 62305-3
- VDE 0185-305-3 (with lightning protection application)

wall thickness
(mm): 500
Threaded bolt: M12

