

Insulated earthing entry

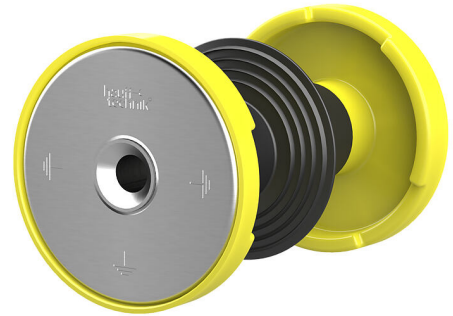
HEA IS M12/120

: 1710020120, GTIN: 4052487045339



- **Patented twist resistance provided by special contour of contact washer**

Specifically for station construction. Installed during formwork work. Earthing connections to the building can be made with the thread on both sides in the electrically isolated conductor core.



Advantages:

- Isolated earth for separate checking of earthing
- Water barrier for tightness with concrete
- Watertight M12 connection thread on both sides (blind hole)
- Resistant to corrosion
- Short-circuit-tested

Scope of delivery:

- Protective cover on both sides

Dimensions:

- Conductor core: round, \varnothing 25 mm
- Contact washer: \varnothing 72 mm
- Minimum wall thickness: 70 mm

Application range:

- Waterproof concrete stress class 1, waterproof concrete stress class 2

Material:

- Conductor core and contact washers: stainless steel V4A (AISI 316L)
- Protective cover: cellular rubber
- Electrical insulation: EPDM
- Water barrier: EPDM

Tests/Standards:

- To VDE 0101, EN 50522

wall thickness
(mm): 120
Threaded bolt: M12

