

Single building entry MIS

with membrane injection system

MIS100D 1x58-64 Gas



- **universal building entry with membrane injection system for core holes in the most common types of wall**
- **Controlled resin discharge through slotted membrane hose**

Universal house entry with membrane injection system for drill holes in the most common wall types for inserting and sealing the gas section through the cellar wall. In addition, two micropipes 7 mm or 10 mm can be inserted.



Picture may differ from selected product

FACTS

Advantages:

- is pushed directly onto the gas fitting
- No repair of the basement waterproofing in accordance with DIN 18533 necessary

Scope of delivery:

- 1 packing unit: 6 items

Dimensions:

- For core drills Ø: 99 - 103 mm
- For wall thicknesses: from 240 to 600 mm

Properties:

- DVGW-certified



Application range:

- Water exposure class DIN 18533: W1-E and W2.1-E
- Waterproof concrete stress class 1 and 2
- For gas combined building entries manufactured by Schuck and RMA DN25
- Suitable for 2 speed-pipes 7 mm or 10 mm

Material:

- Flange component, wall rosette, membrane hose: EPDM
- Resin injection hose: PE
- Quick tensioning device: glass fibre reinforced polyamide/ABS
- Sealing tape: butyl

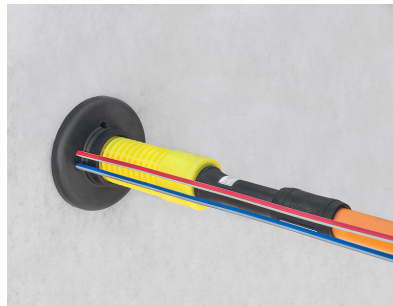
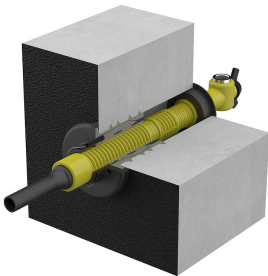
Tightness:

- gastight and watertight to 1.0 bar

Tests/Standards:

- DVGW VP 601

PICTURES



ACCESSORIES REQUIRED



Cartridge gun



Quick tensioning device MIS



Wall rosette



2-component resin M3000