

# Single building entry MIS

with membrane injection system

## MIS100D 1x58-64 Gas

: 3030300100, GTIN: 4052487220224



- **Universal building entry with membrane injection system for drill holes in the most common types of wall**
- **Controlled ejection of resin through slit membrane hose**



### Advantages:

- Not necessary to restore basement seal to DIN 18533



### Scope of delivery:

- 1 packing unit:
- 6 pieces MIS 100/58-64

### Dimensions:

- For core drills  $\varnothing$ : 99 - 103 mm
- For wall thicknesses: from 240 to 600 mm

### Properties:

- DVGW-certified

## Application range:

- DIN 18533 W1-E, DIN 18533 W2.1-E
- Waterproof concrete stress class 1, waterproof concrete stress class 2
- For gas combined building entries manufactured by Schuck and RMA DN25
- Suitable for 2 speed-pipes 7 mm or 10 mm

## Material:

- Flange component, wall rosette, membrane hose: EPDM
- Resin filler hose: PE
- Fast arrangement fixture: glass fibre reinforced polyamide/ABS
- Sealing tape: butyl

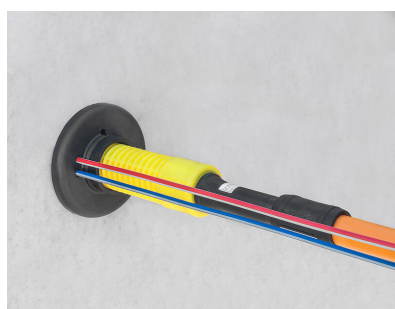
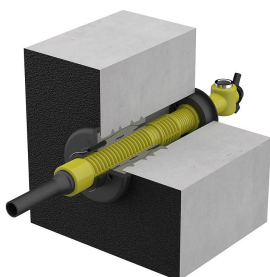
## Tightness:

- gastight and watertight to 1.0 bar

## Tests/Standards:

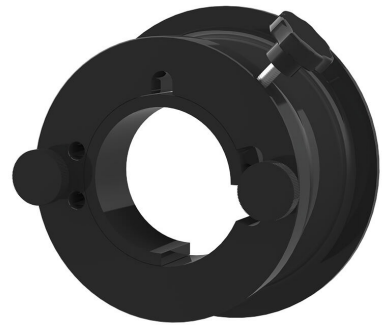
- DVGW VP 601

Number of cables/medium overall:	1
Number of cables/medium:	1
Suitable for medium pipe OD (mm):	58 - 64
wall thickness (mm):	240 - 600
Packing unit:	6





Cartridge gun



Quick tensioning device MIS



Wall rosette